

Urban Design & Transportation for a Post-COVID Future

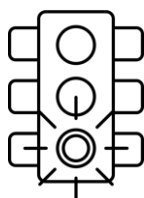
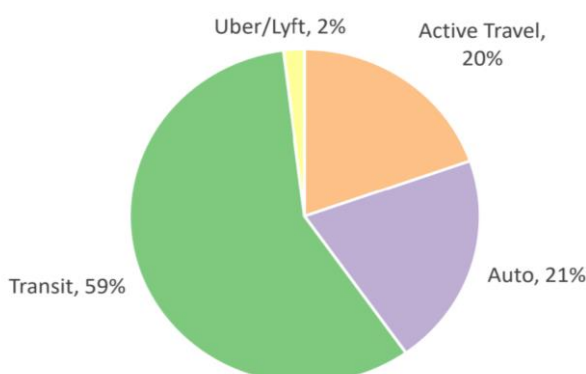


Transportation systems are essential for sustainable, resilient, and equitable cities



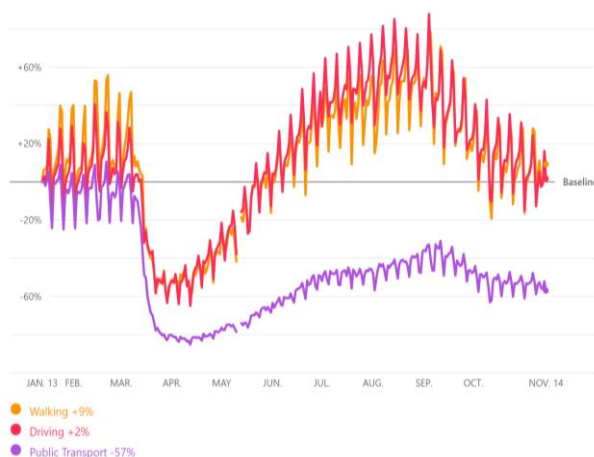
Public Transit and COVID Survey in Vancouver₁

Post-COVID Mode Split of Pre-COVID Transit Commuters Who Still Physically Commute



Stay-at-home regulations in March caused major disruptions to mobility patterns

Mobility Trends in Canada Apple Maps



Survey Findings & Implications

The Public Transit and COVID-19 Survey was conducted in Toronto and Vancouver during the month of May 2020₁

Essential workers continued to rely on public transit

- 48% were in healthcare and similar industries
- 78% were grocery and retail workers & others

Disparities in mode of transportation options exist due to factors such as income and job industry

Respondents who **stopped using public transport** & had **no access to a car** had difficulties in:

- **Carrying out daily activities**
- **Accessing grocery stores and healthcare services**

Respondents who **switched to active modes of transportation** reported **inability to safely physically distance** due to lack of street space

Street Reallocations

Active transportation includes walking and cycling



The **COVID-19 Street Rebalancing Guide** provides strategies to redesign street spaces to **enhance safety and physical and mental well-being**



Equity Impacts

COVID-19 has exacerbated existing inequities in the design of cities and transportation systems



Physical distancing can be difficult in certain areas:

- **Dense and overcrowded neighbourhoods** make it difficult to practice **safe physical distancing** & COVID-19 infection
- **Essential workers** may be more likely to be living in these communities



Environmental and wildlife preservation should also be considered in planning transportation strategies



An equity lens is needed in the redesigning of cities and transportation systems to address existing inequities and support for an inclusive recovery

What Can We Do?

Collaborate with and **amplify Indigenous and marginalized voices** and **incorporate their perspectives** into city planning

Use the **COVID-19 and Public Transport Survey** to **inform** in the redesigning of transportation systems

Continue to invest in existing street reallocations and public spaces, working toward building **permanent and resilient solutions**

Learn more about recommendations for **greener, cleaner, and decarbonized transportation systems** in the **2020 Declaration of Resilience in Canadian Cities**

This information was presented on June 10th, 2020 as a contribution to the series: "Learning and Relearning for Planetary Health" <https://learningforplaneta.wixsite.com/website/webinar-9>

1. https://drive.google.com/file/d/1xrHpwTg1fEuWAllqId-5N_Ouy89HYN4p/view